



## APPLICATION NOTE

### S300 THERMAL IMAGING CAMERA

### Adani Electricity Mumbai

**Application requirement:**

Adani Electricity Mumbai required a handheld solution that could detect hotspots quickly, accurately, and in real-time, to ensure the safety and reliability of their power distribution network. They needed a portable device that could be easily used by LT & HT engineers to perform spot checks on bus bars, panels, and junction boxes.

**Solution:**

Adani Electricity Mumbai implemented the S300 Thermal imaging system to address their hotspot detection needs. The S300 is a handheld thermal imaging camera that can detect hotspots in real-time, even in hard-to-reach areas or in hazardous environments.

Customer Name: Adani Electricity Mumbai  
Service Provider: NA



**Application requirement:**

Adani Electricity Mumbai required a handheld solution that could detect hotspots quickly, accurately, and in real-time, to ensure the safety and reliability of their power distribution network. They needed a portable device that could be easily used by LT & HT engineers to perform spot checks on bus bars, panels, and junction boxes.

**Solution:**

Adani Electricity Mumbai implemented the S300 Thermal imaging system to address their hotspot detection needs. The S300 is a handheld thermal imaging camera that can detect hotspots in real-time, even in hard-to-reach areas or in hazardous environments.

The S300 system is equipped with an advanced thermal imaging camera, which can detect temperature variations as small as 0.1 degrees Celsius. The system is also capable of capturing and analysing images at high speeds, enabling Adani Electricity Mumbai to monitor their power distribution network continuously.

The **Wi-Fi capability** help the users to generate a report on field with the help of the Wi-Fi system data can be transferred including images to the mobile allowing to create a report and send it to the dept. directly from the field without using their laptops.

By utilizing the S300 system, Adani Electricity Mumbai was able to achieve several key advantages, including:

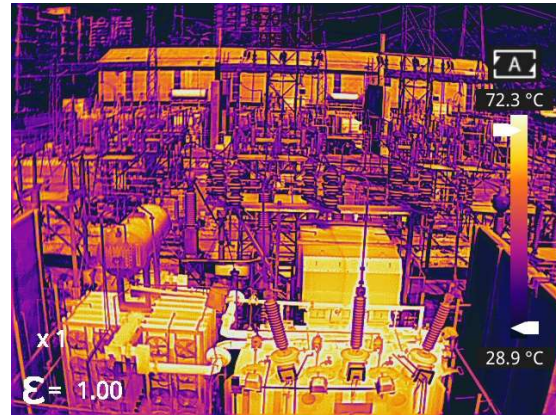
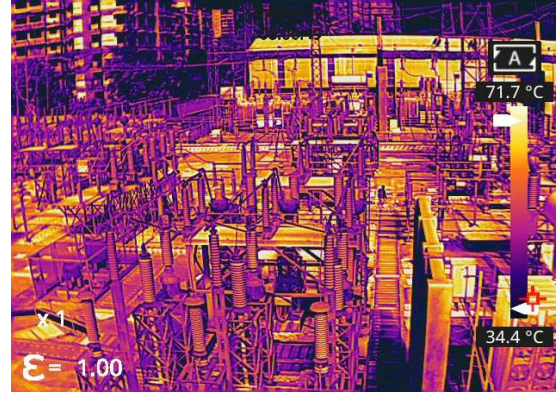
**Improved safety:** The S300 system can detect hotspots in real-time, enabling LT & HT engineers to take immediate action to prevent equipment failure or electrical fires.

**Increased efficiency:** The S300 system is portable and easy to use, allowing LT & HT engineers to perform spot checks quickly and efficiently.

**Enhanced reliability:** The S300 system provides accurate and reliable hotspot detection, ensuring the safety and reliability of Adani Electricity Mumbai's power distribution network.

Overall, the S300 Thermal imaging system has enabled Adani Electricity Mumbai to improve their hotspot detection capabilities

and ensure the safety and reliability of their power distribution network.”



Document ref :

Date : 22-Mar-2023



Asian Contec Ltd.

Asian Center, B-28, Okhla Industrial Area, Phase-1, New Delhi -110020, India.

Contact Nos. : Tel : +91-11-41860000 (100 Lines), Direct Sales Helpline : +91-11-41406926

Web : [www.stanlay.in](http://www.stanlay.in) [www.stanlay.com](http://www.stanlay.com) email: [sales@stanlay.com](mailto:sales@stanlay.com)

Regional Offices : • Faridabad • Lucknow • Mumbai • Ahmedabad • Bengaluru • Hyderabad • Bhubaneshwar • Guwahati • Vadodara

